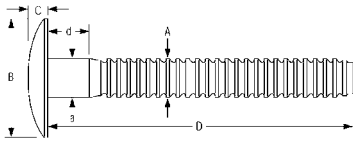




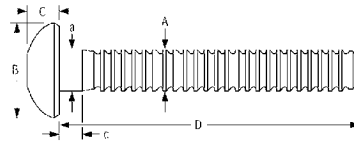
**BYLER RIVET**



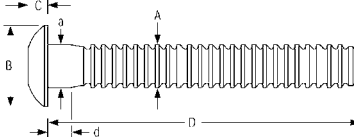
HUCK



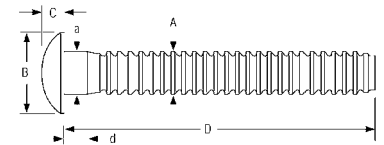
**Broad Truss Head - MGP30**



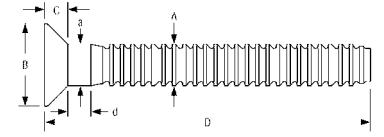
**Button Head - MGPB**



**Truss Head - MGPT**



**MGP98T "Paccar" Head**



**90° Flush Head - MGP90**

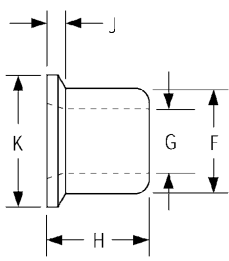
TYPE OF RIVET	DIA.	MFG. PART NO.	BYLER PART NO.	GRIP RANGE	RIVET DIMENSIONS				MIN. VALUES IN LBS.			
					A	B	C	D	a-ref	d-ref	SHEAR	TENSILE
<b>BUTTON HEAD</b> Aluminum	3/16	MGPB-E6-10	430114090610	.062-.625	.183-.187	.356-.394	.113-.125	1.788	.191-.195	.114	750	900
	1/4	MGPB-E8-10	430114090810	.062-.625	.245-.249	.475-.525	.136-.152	1.965	.250-.259	.125	1200	1620
	5/16	MGPB-E10-12	430114091012	.125-.750	.307-.311	.594-.656	.181-.201	2.34	.274-.283	.250	2200	2500
	3/8	MGPB-E12-14	430114091214	.125-.875	.369-.375	.713-.787	.223-.248	2.875	.380-.385	.188	3000	4000
<b>MGP98T HEAD</b> Aluminum	3/16	MGP98T-E6-10	430114040610	.062-.625	.183-.187	.450-.488	.091-.105	1.788	.191-.195	.114	750	900
		MGP98T-E6-20	430114040620	.312-1.25				2.37		.312		
<b>TRUSS HEAD</b> Aluminum	1/4	MGPT-E8-10	430114020810	.062-.625	.245-.249	.531-.594	.103-.115	1.965	.250-.259	.125	1200	1620
		MGPT-E8-20	430114020820	.312-1.25				2.56		.312		
<b>90° CSK</b> Aluminum	3/16	MGP90-E6-10	430114070610	.062-.625	.183-.187	.323-.359	.092-.102	1.788	.191-.195	*	750	900
	1/4	MGP90-E8-10	430114070810	.062-.625	.245-.249	.433-.478	.119-.128	1.965	.217-.226	*	1200	1620
<b>BROAD TRUSS</b> Aluminum	3/8	MGP30-E12-24	430114031224	.625-1.50	.245-.249	.698-.802	.119-.149	3.375	.380-.385	.680	3000	4000
<b>BUTTON HEAD</b> Steel	3/16	MGPB-R6-10G	4301200906101	.062-.625	.183-.187	.356-.394	.113-.125	1.788	.191-.195	.114	1725	1400
		MGPB-R6-20G	4301200906201	.312-1.25				2.73		.312		
	1/4	MGPB-R8-10G	4301200908101	.062-.625	.245-.249	.475-.525	.136-.152	1.965	.250-.259	.125	2200	2550
		MGPB-R8-20G	4301200908201	.312-1.25				2.56		.312		
	5/16	MGPB-R10-12G	4301200910121	.125-.750	.307-.311	.594-.656	.181-.201	2.34	.274-.283	.250	3000	3910
		MGPB-R10-22G	4301200910221	.625-1.375				2.84		.550		
	3/8	MGPB-R12-14G	4301200912141	.125-.875	.369-.375	.713-.787	.223-.248	2.875	.380-.385	.188	4200	5625
		MGPB-R12-26G	4301200912261	.812-1.625				3.5		.810		
<b>MGP98T HEAD</b> Steel	3/16	MGP98T-R6-10G	4301200406101	.062-.625	.183-.187	.450-.488	.091-.105	1.801	.191-.195	.087	1725	1400
		MGP98T-R6-20G	4301200406201	.312-1.25				2.383	.183-.187	.312		
<b>TRUSS HEAD</b> Steel	1/4	MGPT-R8-10G	4301200208101	.062-.625	.245-.249	.542-.582	.103-.115	1.965	.250-.259	.114	2200	2550
		MGPT-R8-20G	4301200208201	.312-1.25				2.56		.312		
	5/16	MGPT-R10-12G	4301200210121	.125-.750	.307-.311	.703-.797	.127-.141	2.34	.274-.283	.265	3000	3910
	3/8	MGPT-R12-14G	4301200212141	.125-.875	.369-.375	.828-.922	.152-.168	2.875	.380-.385	.188	4200	5625
	3/16	MGP90-R6-10G	4301200706101	.062-.625	.183-.187	.323-.359	.092-.102	1.788	.191-.195	*	1725	1400
<b>90° CSK</b> Steel	1/4	MGP90-R8-10G	4301200708101	.062-.625	.245-.249	.433-.478	.119-.128	1.965	.217-.226	.204	2200	2550
		MGP90-R8-20G	4301200708201	.312-1.255			.102-.115	2.56	.275-.280			
<b>BROAD TRUSS</b> Steel	1/4	MGP30-R8-10G	4301200308101	.156-.625	.245-.249	.937	.138-.162	1.965	.250-.259	.125	2200	2550
		MGP30-R8-24G	4301200308241	.625-1.500				2.81		.562		
	3/8	MGP30-R12-24G	4301200312241	.625-1.500	.369-.375	1.188-1.25	.188-.212	3.375	.380-.385	.680	4200	5625
		MGP30-R12-32G	4301200312321	1.125-2.00				3.875		1.18		

\* "d" dimension is not applicable to short grip CSK parts.

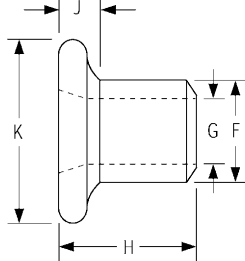
HOLE SIZE					
DIA.	MAX HOLE SIZE	DRILL SIZE	DIA.	MAX HOLE SIZE	DRILL SIZE
3/16	.203	13/64	5/16	.328	21/64
1/4	.265	17/64	3/8	.390	25/64



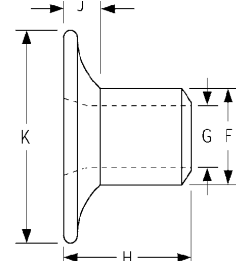
**We Repair  
HUCK® Tooling  
in House!**



**Standard Flange MGC**



**Medium Flange MGCS**





**Wide Flange MGCW**

**HUCK**



TYPE OF COLLAR	DIA.	MFG PART #	BYLER PART #	COLLAR DIMENSIONS				
				F	G	H	J	K
<b>MGC STANDARD Aluminum</b>	3/16	MGC-F6	4301912106	.305-.315	.194-.204	.267-.283	.050	.360-.390
	1/4	MGC-F8	4301912108	.395-.405	.250-.260	.367-.383	.062	.485-.515
	5/16	MGC-F10	4301912110	.500-.510	.312-.320	.428-.448	.075	.605-.645
	3/8	MGC-F12	4301912112	.602-.612	.375-.385	.495-.515	.093	.730-.770
<b>MGCW WIDE FLANGE Aluminum</b>	3/16	MGCW-F6	4301912406	.305-.315	.194-.204	.290-.320	.100	.635-.760
<b>MGC STANDARD Steel</b>	3/16	MGC-R6U	43019202061	.305-.315	.187-.197	.267-.283	.050	.360-.390
	1/4	MGC-R8U	43019202081	.395-.405	.250-.260	.367-.383	.062	.485-.515
	5/16	MGC-R10U	43019202101	.500-.510	.312-.320	.428-.448	.075	.605-.645
	3/8	MGC-R12U	43019202121	.602-.612	.375-.385	.495-.515	.093	.730-.770
<b>MGCS MEDIUM FLANGE Steel</b>	3/16	MGCS-R6U	43019203061	.305-.315	.187-.197	.297-.303	.100	.490-.540
<b>MGCW WIDE FLANGE Steel</b>	3/16	MGCW-R6U	43019204061	.305-.315	.187-.197	.290-.320	.100	.635-.760
	1/4	MGCW-R8U	43019204081	.395-.405	.250-.260	.427-.467	.130	.850-1.010
<b>MGC STANDARD Cadmium Plated</b>	3/16	MGC-R6C	4301920262	.305-.315	*	.267-.283	.050	.360-.390
	1/4	MGC-R8C	43019202082	.395-.405	.250-.260	.367-.383	.062	.485-.515
	5/16	MGC-R10C	43019202102	.500-.510	.312-.320	.428-.448	.075	.605-.645
	3/8	MGC-R12C	43019202122	.602-.612	.375-.385	.495-.515	.093	.730-.770

U = Zinc Chromate Gold; F = 6061 Aluminum; C = Cadmium Plated

## Installation Tools for MAGNA-GRIP®

3/16" and 1/4" DIA.		
MODEL #2025	MODEL #2480	
		
PNEUDRAULIC	HYDRAULIC	
DIA.	Nose Assembly	
	2025	2480
3/16"	592991456	592993201
1/4"	592991458	592993204

\*Nose Assembly Sold Separately.

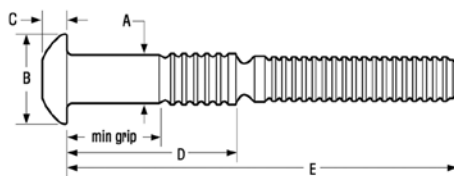
1/4", 5/16" and 3/8" DIA.		
MODEL #256	MODEL #2580	
		
PNEUDRAULIC	HYDRAULIC	
DIA.	Nose Assembly	
	256	2580
1/4"	592993207	
5/16"	592991439	
3/8"	592991440	

See also the Huck Tool pages 60-62

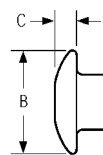
# C6L®/C120® "HUCK" BOLTS



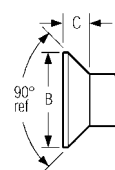
**HUCK**



**Brazier Head - C6LB**



**Truss Head - C6LT**



**Flush Head - C6L90**

TYPE OF RIVET	DIA.	MFG PART #	BYLER PART #	GRIP RANGE	RIVET DIMENSIONS					MIN. VALUES IN LBS.	
					A	B	C	D	E	SHEAR	TENSILE
<b>BRAZIER HEAD</b> Aluminum	3/8	C6LB-C12-6	420111011206	.250-.500	.380-.385	.713-.787	.223-.248	0.934	2.250	4200	4200
		C6LB-C12-8	420111011208	.375-.625				1.059	2.375		
		C6LB-C12-10	420111011210	.500-.750				1.184	2.500		
		C6LB-C12-12	420111011212	.625-.875				1.309	2.625		
<b>BRAZIER HEAD</b> Steel	1/4	C6LB-R8-4G	4201200108041	.188-.313	.254-.259	.475-.525	.136-.152	0.610	1.645	3050	3000
		C6LB-R8-5G	4201200108051	.250-.375				0.673	1.708		
		C6LB-R8-6G	4201200108061	.313-.438				0.735	1.770		
		C6LB-R8-8G	4201200108081	.438-.563				0.860	1.895		
		C6LB-R8-10G	4201200108101	.563-.688				0.985	2.020		
		C6LB-R8-12G	4201200108121	.688-.813				1.110	2.145		
	5/16	C6LB-R10-6G	4201200110061	.250-.500	.317-.322	.595-.656	.181-.201	0.874	2.035	4725	4600
		C6LB-R10-8G	4201200110081	.375-.625				1.000	2.156		
	3/8	C6LB-R12-4G	4201200112041	.125-.375	.380-.385	.713-.787	.223-.248	0.809	2.121	6825	6500
		C6LB-R12-6G	4201200112061	.250-.500				0.934	2.246		
		C6LB-R12-8G	4201200112081	.375-.625				1.059	2.371		
		C6LB-R12-10G	4201200112101	.500-.750				1.184	2.496		
		C6LB-R12-12G	4201200112121	.625-.875				1.309	2.621		
<b>BRAZIER HEAD</b> Stainless Steel	3/16	C6LB-U6-4	4201300106040	.188-.313	.191-.195	.356-.394	.078-.088	0.519	1.529	2000	1455
		C6LB-U6-5	4201300106050	.250-.375				0.582	1.591		
		C6LB-U6-6	4201300106060	.313-.438				0.644	1.654		
	1/4	C6LB-U8-4	4201300108040	.188-.313	.254-.259	.475-.525	.136-.152	0.610	1.645	3550	2750
		C6LB-U8-6	4201300108060	.313-.438				0.735	1.770		
		C6LB-U8-8	4201300108080	.438-.563				0.860	1.895		
	3/8	C6LB-U12-6	4201300112060	.250-.500	.380-.385	.713-.787	.223-.248	0.934	2.246	7950	6100
		C6LB-U12-8	4201300112080	.375-.625				1.059	2.371		
		C6LB-U12-10	4201300112100	.500-.750				1.184	2.496		
<b>TRUSS HEAD</b> Stainless Steel	3/8	C6LT-U12-4	4201300212041	.125-.375	.380-.385	.828-.922	.186-.202	0.809	2.121	7950	6100
		C6LT-U12-6	4201300212061	.250-.500				0.934	2.246		
		C6LT-U12-8	4201300212081	.375-.625				1.059	2.371		
		C6LT-U12-10	4201300212101	.500-.750				1.184	2.496		
		C6LT-U12-12	4201300212121	.625-.875				1.184	2.496		
<b>C98LT HEAD</b> Stainless Steel Bright Polished	3/16	C98LT-U6-3BR	420130180603	.125-.250	.191-.195	.406-.469	.078-.088	0.457	1.466	2000	1455
		C98LT-U6-5BR	420130180605	.250-.375				0.582	1.529		
		C98LT-U6-7BR	420130180607	.375-.500				0.707	1.716		
		C98LT-U6-9BR	420130180609	.500-.625				0.832	1.841		
		C98LT-U6-11BR	420130180611	.625-.750				0.957	1.966		
		C98LT-U6-12BR	420130180612	.688-.813				1.019	2.029		
<b>TRUSS HEAD</b> Stainless Steel Cap Steel Body	1/4	C6LTC-R8-6	4201200308063	.313-.438	.254-.259	.610 max	.165 max	0.735	1.770	3050	3000
		C6LTC-R8-8	4201200308083	.438-.563				0.860	1.895		
		C6LTC-R8-10	4201200308103	.563-.688				0.985	2.020		
		C6LTC-R8-12	4201200308123	.688-.813				1.110	2.145		
	3/8	C6LTC-R12-6	4201200312063	.250-.500	.380-.385	.828-.922	.152-.168	0.934	2.246	6825	6500
		C6LTC-R12-8	4201200312083	.375-.625				1.059	2.371		
		C6LTC-R12-10	4201200312103	.500-.750				1.184	2.496		
		C6LTC-R12-12	4201200312123	.625-.875				1.309	2.621		
		C6LTC-R12-14	4201200312143	.750-1.00				1.434	2.746		

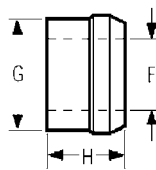
Contact Byler Rivet for C6L & C6L90 fasteners not published.

**C120 - Grade 5**  
**Pins & Collars available**  
Minimums may apply.

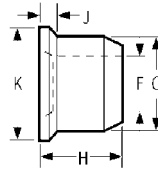
DIA.	MAX HOLE	DRILL SIZE
3/16	.219	13/64 = 16687010
1/4	.281	17/64 = 16687050
5/16	.359	11/32 = 16687100
3/8	.422	25/64 = 16687130



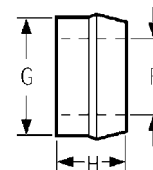
**WE REPAIR  
"HUCK"  
TOOLS!**



LC/2LC



3LC



8LC

TYPE OF COLLAR	DIA.	MFG PART #	BYLER PART #	COLLAR DIMENSIONS		
				F	G	H
2LC STANDARD Aluminum	3/16	2LC-F6	42019133206	.187-.196	.311-.304	.218-.248
	1/4	2LC-F8	42019133208	.256-.265	.409-.402	.290-.320
	5/16	2LC-F10	42019133210	.304-.310	.485-.494	.350-.380
	3/8	2LC-F12	42019133212	.375-.385	.590-.600	.430-.460
2LC STANDARD Steel	3/16	2LC-R6G	42019202061	.187-.196	.311-.304	.218-.248
	1/4	2LC-R8G	42019202081	.256-.265	.409-.402	.290-.320
	5/16	2LC-R10G	42019202101	.304-.310	.485-.494	.350-.380
	3/8	2LC-R12G	42019202121	.375-.385	.590-.600	.430-.460
2LC STANDARD Stainless Steel	3/16	2LC-2CU6	42019302062	.187-.196	.311-.304	.218-.248
	1/4	2LC-2CU8	42019302082	.256-.265	.409-.402	.290-.320
	5/16	2LC-2CU10	42019302102	.304-.310	.485-.494	.350-.380
	3/8	2LC-2CU12	42019302122	.375-.385	.590-.600	.430-.460

TYPE OF COLLAR	DIA.	MFG PART #	BYLER PART #	COLLAR DIMENSIONS				
				F	G	H	J	K
3LC FLANGE Aluminum	1/4	3LC-F8	42019133308	.256-.267	.409-.402	.349-.379	.047-.078	.484-.516
	5/16	3LC-F10	42019133310	.304-.312	.498-.507	.394-.426	.062-.094	.609-.641
	3/8	3LC-F12	42019133312	.378-.390	.599-.610	.502-.532	.062-.125	.719-.781
3LC FLANGE Steel	3/16	3LC-2R6G	42019203061	.187-.196	.304-.311	.250-.280	.031-.062	.359-.391
	1/4	3LC-2R8G	42019203081	.256-.267	.409-.402	.349-.379	.047-.078	.484-.516
	5/16	3LC-2R10G	42019203101	.304-.312	.498-.507	.394-.426	.062-.094	.609-.641
	3/8	3LC-2R12G	42019203121	.378-.390	.599-.610	.502-.532	.062-.125	.719-.781
3LC FLANGE Stainless Steel	3/16	3LC-2CU6	42019303062	.187-.196	.304-.311	.250-.280	.031-.062	.359-.391
	1/4	3LC-2CU8	42019303082	.256-.267	.409-.402	.349-.379	.047-.078	.484-.516
	5/16	3LC-2CU10	42019303102	.304-.312	.498-.507	.394-.426	.062-.094	.609-.641
	3/8	3LC-2CU12	42019303122	.378-.390	.599-.610	.502-.532	.062-.125	.719-.781





- When using 3LC collars, add "J" dimensions to thickness of material being fastened to determine grip number.

\*Wide Flange 3/16" and 1/4" collars available in steel and stainless steel. Minimums may apply

## Installation Tools for C6L®/C120®

3/16" and 1/4" DIA.	
MODEL #2025	MODEL #2480
	
DIA.	Nose Assembly
3/16"	592993003
1/4"	592993006

5/16" and 3/8" DIA.	
MODEL #256	MODEL #2580
	
DIA.	Nose Assembly
5/16"	5929999245
3/8"	59299100245



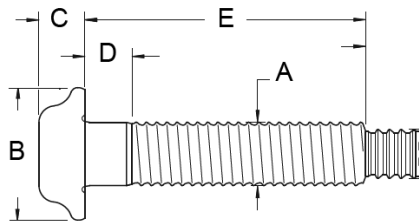
Model 940 Hydraulic POWERIG®

- Portable production and repair
- .3 gpm
- Electrically powered; 115 or 220 volts, single phase
- Weighs 75 lbs
- 12.5"L x 10.5"W x 18"H

Part # 591940

\* 256 Tool will pull 3/16" and 1/4" C6L/C120's, but requires reducing adapter #593102463.

\* Nose Assembly sold separately.



The **BOBTAIL® Huckbolt** combined with its rugged installation tools offers a complete system that delivers superior value and performance.

#### Proven Performance

- **High, consistent clamp load**
- **Vibration proof**
- **High fatigue endurance, high shear and tensile loads**

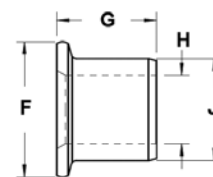
## GRADE 8 - Metric

TYPE	MFG PART #	BYLER PART #	GRIP RANGE* (MIN - MAX)	A MAX	B	C	D MAX	E MAX	MAX HOLE	MIN VALUES IN LBS.		
										SHEAR	CLAMP	TENSILE
FLANGED HEAD 12mm	MBT-DT12-10	461023011210	5-15mm				3.8	34.2				
	MBT-DT12-15	461023011215	10-20mm				3.8	39.2				
	MBT-DT12-20	461023011220	15-25mm				3.8	44.2				
	MBT-DT12-25	461023011225	20-30mm	12.0	24.1-25.4	8.9-9.6	3.8	49.2	13.5mm	14,700	14,600	19,700
	MBT-DT12-30	461023011230	25-35mm				3.8	54.2				
	MBT-DT12-35	461023011235	30-40mm				3.8	59.2				
	MBT-DT12-40	461023011240	35-45mm				3.8	64.2				
FLANGED HEAD 14mm	MBT-DT14-10	461023011410	5-15mm				3.8	37.1				
	MBT-DT14-15	461023011415	10-20mm				3.8	42.1				
	MBT-DT14-20	461023011420	15-25mm				3.8	47.1				
	MBT-DT14-25	461023011425	20-30mm	14.0	30.0 MAX	11.5 MAX	3.8	52.1	15.5mm	21,100	19,500	27,000
	MBT-DT14-30	461023011430	25-35mm				3.8	57.1				
	MBT-DT14-35	461023011435	30-40mm				3.8	62.1				
	MBT-DT14-40	461023011440	35-45mm				3.8	67.1				
FLANGED HEAD 16mm	MBT-DT16-10	461023011610	5-15mm				3.8	40.1				
	MBT-DT16-15	461023011615	10-20mm				3.8	45.1				
	MBT-DT16-20	461023011620	15-25mm				3.8	50.1				
	MBT-DT16-25	461023011625	20-30mm	16.0	32.3-33.8	11.4-12.2	3.8	55.1	17.5mm	26,000	26,000	36,600
	MBT-DT16-30	461023011630	25-35mm				3.8	60.1				
	MBT-DT16-35	461023011635	30-40mm				3.8	65.1				
	MBT-DT16-40	461023011640	35-45mm				3.8	70.1				
FLANGED HEAD 20mm	MBT-DT20-10	461023012010	5-15mm				3.8	45.9				
	MBT-DT20-15	461023012015	10-20mm				3.8	50.9				
	MBT-DT20-20	461023012020	15-25mm				3.8	55.1				
	MBT-DT20-25	461023012025	20-30mm	20.0	40.3-42.4	15.0-16.0	3.8	60.9	22mm	41,000	40,700	57,300
	MBT-DT20-30	461023012030	25-35mm				3.8	65.9				
	MBT-DT20-35	461023012035	30-40mm				3.8	70.9				
	MBT-DT20-40	461023012040	35-45mm				3.8	75.9				

\*Grip ranges in mm. Other sizes available.

## Collar

COLLAR STYLE	DIA.	MFG PART #	BYLER PART #	COLLAR DIMENSIONS			
				F	G	H	J
STEEL	12mm	MBTC-R16BL	46119032161	24.1-25.4	17.3-17.7	18.3-18.5	12.1-12.3
	14mm	MBTC-R20BL	46119032201	28.2-29.6	20.5-21.0	21.1-21.5	14.0-14.4
	16mm	MBTC-R24BL	46119032241	32.3-33.8	23.1-23.7	24.1-24.5	16.0-16.4
	20mm	MBTC-R28BL	46119032281	40.3-42.1	29.0-29.6	30.2-30.6	20.1-20.5

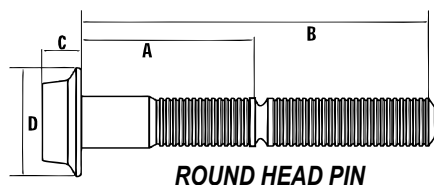


## Tooling

TOOL	12mm		14mm		16mm		20mm	
	NOSE	CUTTER	NOSE	CUTTER	NOSE	CUTTER	NOSE	CUTTER
2628	-	-	-	-	99-7831	99-7831CC	99-7822	99-782CC
BTT35LS	99-7820	99-7820CC	99-7824	99-7824CC	99-7821	99-7821CC	-	-
SFBTT20	99-7880	99-7880CC	99-7884	99-7884CC	99-7881	99-7881CC	-	-
BTT57	-	-	-	-	-	-	99-7852	99-7852CC



**BTT35LS**



ROUND HEAD PIN

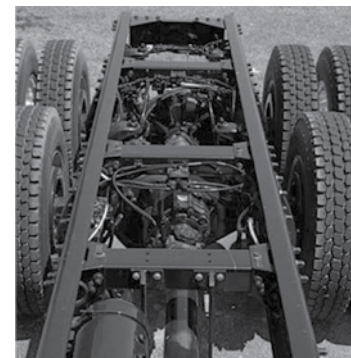


## Grade 8 Fastener

The HP8®, provides an easy-to-use system that delivers a permanent, vibration resistant clamp. These fasteners, available in diameters ranging from 1/2" to 3/4", offer fast, tamper-resistant installation, with only a visual inspection required.

## Fastener Dimensions

TYPE	MFG PART #	BYLER PART #	RIVET DIMENSIONS				GRIP DATA 1/2", 5/8", 3/4"	
			A	B	C	D	GRIP NO.	GRIP RANGE
1/2" ROUND HEAD (DT16)	HP8F-DT16-8	440140101608	1.625	3.550			8	.250-.750
	HP8F-DT16-12	440140101612	1.875	3.800			12	.500-1.000
	HP8F-DT16-16	440140101616	2.125	4.050	.307	1.070	16	.750-1.250
	HP8F-DT16-20	440140101620	2.375	4.300			20	1.00-1.50
	***	***	***	***			28	1.50-2.00
5/8" ROUND HEAD (DT20)	HP8F-DT20-4	440140102004	-	-			36	2.00-2.50
	HP8F-DT20-6	440140102006	-	-			44	2.50-3.00
	HP8F-DT20-8	440140102008	1.820	4.038			52	3.00-3.50
	HP8F-DT20-12	440140102012	2.070	4.288	.498	1.330	60	3.50-4.00
	HP8F-DT20-16	440140102016	2.320	4.538				
	HP8F-DT20-20	440140102020	2.570	4.788				
	HP8F-DT20-28	440140102028	3.070	5.288				
	HP8F-DT20-36	440140102036	3.570	5.788				
	HP8F-DT20-44	440140102044	4.070	6.288				
	***	***	***	***				
3/4" ROUND HEAD (DT24)	HP8F-DT24-8	440140102408	2.000	4.640				
	HP8F-DT24-12	440140102412	2.250	4.890				
	HP8F-DT24-16	440140102416	2.500	5.140	.600	1.590		
	HP8F-DT24-20	440140102420	2.750	5.390				
	HP8F-DT24-28	440140102428	3.250	5.890				
	HP8F-DT24-36	440140102436	3.750	6.390				
	***	***	***	***				

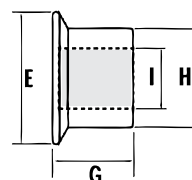


### Benefits:

- Heavy duty two piece fastener with a wide grip range
- High resistance to vibratory loosening
- Visual inspection to confirm joint integrity
- Meets strength performance of grade 8

\*Longer lengths available. Minimums may apply.

DIA.	MFG PART #	BYLER PART #	COLLAR DIMENSIONS			
			E	G	H	I
1/2"	HPCF-R16U	440192010161	1.085	.750	.812	.519
5/8"	HPCF-R20U	440192010201	1.358	.922	1.009	.645
3/4"	HPCF-R24U	440192010241	1.600	1.107	1.213	.780



## Collars

## HP8 Tooling

1/2" DIA.	5/8" DIA.	5/8" & 3/4" DIA.
<b>MODEL # 2620 / 2620PT</b>	<b>MODEL # 2624</b>	<b>MODEL # 2628</b>
PT = Pass Thru		
<b>NOSE ASSEMBLY</b>	<b>NOSE ASSEMBLY</b>	<b>NOSE ASSEMBLY</b>
592995307 592995300 = Pass Thru	592995301	5/8" = 592995301 3/4" = 592995303

### MODEL 940 Hydraulic POWERIG®

- Portable production and repair
- .3 GPM
- Electrically powered; 115 or 220 volts, single phase
- Weighs 75 lbs
- 12.5"L x 10.5"W x 18"H



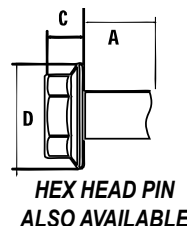
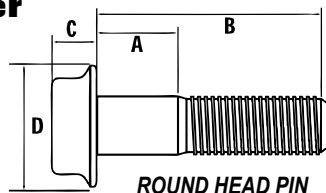
Part # 591940

### MODEL 918 Hydraulic POWERIG®

- High-production applications
- Operates up to 2 tools; 2 gpm flow rate
- Electricity powered; 220, 440, or 550 volts, 3 phase
- Weighs 708 lbs, operational
- 44"L x 25"W x 30"H



Part # 591918



To install the Huck-Spin® Fastener, you need the following:

1. PowerRig® 940/PowerRig 918®
2. 2624 HS Tool
3. Pulling Head
4. Gauge # 127444

Optional:

1. Collar Cutter for removal of Huck-Spin® only

## Dimensions - Inches

SIZE	MFG PART #	BYLER PART #	DIMENSIONS	
			B	C
1/2" ROUND HEAD (DT16) D = 1.07	HSP8-DT16-08	460140101608	1.965	.397
	HSP8-DT16-10	460140101610	2.090	
	HSP8-DT16-12	460140101612	2.215	
	HSP8-DT16-16	460140101616	2.465	
	HSP8-DT16-20	460140101620	2.715	
5/8" ROUND HEAD (DT20) D = 1.33	HSP8-DT20-04	460140102004	2.005	.498
	HSP8-DT20-06	460140102006	2.130	
	HSP8-DT20-08	460140102008	2.255	
	HSP8-DT20-10	460140102010	2.380	
	HSP8-DT20-12	460140102012	2.505	
	HSP8-DT20-16	460140102016	2.755	
	HSP8-DT20-20	460140102020	3.005	
	HSP8-DT20-24	460140102024	3.255	
	HSP8-DT20-28	460140102028	3.505	
	HSP8-DT20-32	460140102032	3.755	
3/4" ROUND HEAD (DT24) D = 1.59	HSP8-DT20-36	460140102036	4.005	.600
	HSP8-DT20-44	460140102044	-	
	HSP8-DT24-08	460140102408	2.540	
	HSP8-DT24-12	460140102412	2.790	
	HSP8-DT24-16	460140102416	3.040	
	HSP8-DT24-20	460140102420	3.290	
	HSP8-DT24-24	460140102424	3.540	
	HSP8-DT24-28	460140102428	3.790	
	HSP8-DT24-32	460140102432	4.040	
	HSP8-DT24-36	460140102436	4.290	

## Dimensions - Metric

SIZE	MFG PART #	BYLER PART #	DIMENSIONS	
			B	C
14mm ROUND HEAD (DT14) D = 30.00	MHSPF-DT14-10	46015011410	54.42	11.50
	MHSPF-DT14-15	46015011415	59.42	
	MHSPF-DT14-20	46015011420	64.42	
	MHSPF-DT14-25	46015011425	69.42	
	MHSPF-DT14-30	46015011430	74.42	
	MHSPF-DT14-35	46015011435	79.42	
	MHSPF-DT14-40	46015011440	84.42	
	MHSPF-DT14-50	46015011450	94.42	
	MHSPF-DT14-55	46015011455	99.42	
	MHSPF-DT14-60	46015011460	104.42	
16mm ROUND HEAD (DT16) D = 24.10	MHSPF-DT16-15	46015011615	59.41	12.80
	MHSPF-DT16-17	46015011617	-	
	MHSPF-DT16-25	46015011625	69.41	
	MHSPF-DT16-30	46015011630	74.41	
	MHSPF-DT16-35	46015011635	79.41	
	MHSPF-DT16-40	46015011640	84.41	
20MM ROUND HEAD (DT20) D = 30.10	MHSPF-DT16-45	46015011645	89.41	16.10
	MHSPF-DT20-15	46015012015	68.24	
	MHSPF-DT20-20	46015012020	73.24	
	MHSPF-DT20-25	46015012025	78.24	
	MHSPF-DT20-30	46015012030	83.24	
	MHSPF-DT20-35	46015012035	88.24	
	MHSPF-DT20-40	46015012040	93.24	
	MHSPF-DT20-45	46015012045	98.23	

## Benefits:

A threaded pin, threaded collar, and no pintail

- Threaded pin which allows removal using collar cutting tool
- Without pintails, noise and waste are reduced

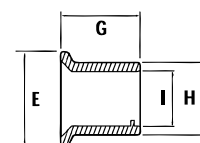
## Grip Data

INCHES		METRIC	
NO.	RANGE	NO.	RANGE
4	.125-.500	10	4-6
6	.125-.625	15	9-21
8	.250-.750	20	14-26
10	.375-.875	25	19-31
12	.500-1.00	30	24-36
16	.750-1.25	35	29-41
20	1.00-1.50	40	34-46
24	1.25-1.75	45	39-51
28	1.50-2.00	50	44-56
32	1.75-2.25	55	49-61
36	2.00-2.50	60	54-66

## Collars

TYPE	DIA.	MFG PART #	BYLER PART #	COLLAR DIMENSIONS			
				E	G	H	I
STANDARD	1/2"	HSCF-R16U*	460192010161	.750	.750	.812	.519
	5/8"	HSCF-R20U*	460192010201	.940	.972	1.009	.645
	3/4"	HSCF-R24U*	460192010241	1.120	1.107	1.213	.780
METRIC	14mm	MHSCF-R14U*	460193010142	31.00	21.80	23.30	14.60
	16mm	MHSCF-R16U*	460193010162	34.80	23.40	25.60	16.46
	20mm	MHSCF-R20U*	460193010202	43.05	28.80	32.10	20.45

\*U = ZINC GOLD DICHROMATE Also available in BLACK PAINTABLE LUBE (R)

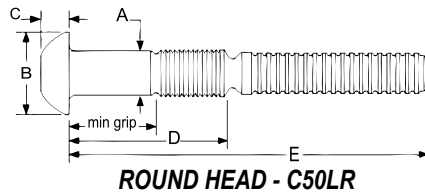


## Huck-Spin® Tooling

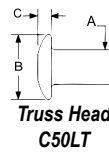
MODEL # 2624HS	DIA.	NOSE ASSEMBLY	COLLAR CUTTER
	1/2"	592997500	5929975001cc
	5/8"	592997501	5929975011cc
	3/4"	592997503	5929975031cc
	14mm	592997415	5929974151cc
	16mm	592997501	5929975011cc
	20mm	592997418	5929974181cc



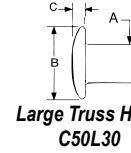
PRESSURE SETTINGS					
TYPE	DIA.	PULL / SWAGE	PULL / CUT	RETURN / SWAGE	RETURN / CUT
Standard	1/2"	3900	3200	3000	2500
	5/8"	5750	5000	4500	4000
	3/4"	7200	6600	6200	5600
Metric	14mm	4600	4000	3600	3000
	16mm	5750	5000	4500	4000
	20mm	8200	7600	7200	6600



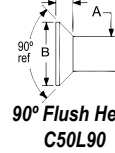
ROUND HEAD - C50LR



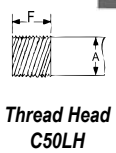
Truss Head  
C50LT



Large Truss Head  
C50L30



90° Flush Head  
C50L90



Thread Head  
C50LH

Other Headstyles Available:

HUCK

## Grip Data and Dimensions

TYPE	MFG PART #	BYLER PART #	GRIP RANGE (MIN - MAX)	B	D	E	MIN VALUES IN LBS.		
							SHEAR	CLAMP	TENSILE
ROUND HEAD STEEL 1/2"	C50LR-BR16-4	4203200816041	.250-.500	.922	1.213	3.172	14400	12050	17050
	C50LR-BR16-8	4203200816081	.500-.750		1.463	3.422			
	C50LR-BR16-12	4203200816121	.750-1.00		1.713	3.672			
	C50LR-BR16-16	4203200816161	1.00-1.25		1.963	3.922			
	C50LR-BR16-20	4203200816201	1.25-1.50		2.213	4.172			
	C50LR-BR16-24	4203200816241	1.50-1.75		2.463	4.422			
	C50LR-BR16-28	4203200816281	1.75-2.00		2.713	4.672			
	C50LR-BR16-32	4203200816321	2.00-2.25		2.963	4.922			
	C50LR-BR16-36	4203200716361	2.25-2.50		3.213	5.172			
ROUND HEAD STEEL 5/8"	C50LR-BR20-4	4203200820041	.250-.500	1.141	1.433	3.656	22500	19200	27100
	C50LR-BR20-8	4203200820081	.500-.750		1.683	3.906			
	C50LR-BR20-12	4203200820121	.750-1.00		1.933	4.156			
	C50LR-BR20-16	4203200820161	1.00-1.25		2.183	4.406			
	C50LR-BR20-20	4203200820201	1.25-1.50		2.433	4.656			
	C50LR-BR20-24	4203200820241	1.50-1.75		2.683	4.906			
	C50LR-BR20-28	4203200820281	1.75-2.00		2.933	5.156			
ROUND HEAD STEEL 3/4"	C50LR-BR24-8	4203200824081	.500-.750	1.375	1.768	4.406	32400	28400	40100
	C50LR-BR24-12	4203200824121	.750-1.00		2.018	4.656			
	C50LR-BR24-16	4203200824161	1.00-1.25		2.268	4.906			
	C50LR-BR24-20	4203200824201	1.25-1.50		2.518	5.156			
	C50LR-BR24-24	4203200824241	1.50-1.75		2.768	5.406			
	C50LR-BR24-28	4203200824281	1.75-2.00		3.018	5.656			
	C50LR-BR24-32	4203200824321	2.00-2.25		3.268	5.906			
	C50LR-BR24-36	4203200824361	2.25-2.50		3.518	6.156			
	C50LR-BR24-40	4203200824401	2.50-2.75		3.768	6.406			
	C50LR-BR24-44	4203200824441	2.75-3.00		4.018	6.656			
ROUND HEAD STEEL 7/8"	C50LR-BR28-16	4203200828161	1.00-1.25	1.594	2.421	5.188	43400	39250	55450
	C50LR-BR28-20	4203200828201	1.25-1.50		2.671	5.438			
	C50LR-BR28-24	4203200828241	1.50-1.75		2.921	5.688			
	C50LR-BR28-28	4203200828281	1.75-2.00		3.171	5.938			
	C50LR-BR28-32	4203200828321	2.00-2.25		3.421	6.188			
	C50LR-BR28-36	4203200828361	2.25-2.50		3.671	6.438			
	C50LR-BR28-40	4203200828401	2.50-2.75		3.921	6.688			
	C50LR-BR28-44	4203200828441	2.75-3.00		4.171	6.938			
LARGE TRUSS HEAD STEEL 5/8"	C50L30-BR20-4GA	4203200320041	.250-.500	1.375	1.433	3.656	22500	19200	27100
	C50L30-BR20-8GA	4203200320081	.500-.750		1.683	3.906			
	C50L30-BR20-12GA	4203200320121	.750-1.00		1.933	4.156			
	C50L30-BR20-16GA	4203200320161	1.00-1.25		2.183	4.406			
	C50L30-BR20-20GA	4203200320201	1.25-1.50		2.433	4.656			

\*Truss head, 90° countersunk and stainless steel also available

\*Factory minimums may apply

## C50 Tooling

MODEL # 2620



MODEL # 2628



NOSE ASSEMBLIES			
DIA.	MODEL 2620	MODEL 2624	MODEL 2628
1/2"	592995000	592995021	592995021
5/8"	-	592995008	592995008
3/4"	-	-	592995010

## MODEL 940 Hydraulic POWERIG®

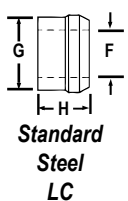
Part # 591940



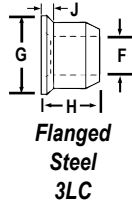
### Tool Specifications:

- Portable production and repair
- 70 GPM
- Electrically powered; 115 or 220 volts, single phase
- Weighs 75 lbs, operational
- 12.5"L x 10.5"W x 18"H

## Collars



Standard  
Steel  
LC



Flanged  
Steel  
3LC

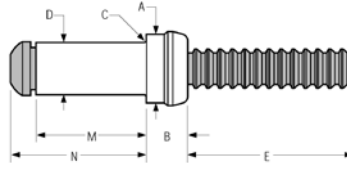


### TAB-LOK™

The Tab-Lok feature makes sure the collar stays on the pin, before installation, in overhead and down slanted pin placements. To order Tab-Lok collars, add an "L" to the end of the manufacturer's part number.

COLLAR STYLE	DIA.	MFG PART #	BYLER PART #	COLLAR DIMENSIONS			
				F	G	H	J
STANDARD STEEL LC	1/2	LC-2R16G	42039201161	.515-.540	.765-.800	.610-.645	N/A
	5/8	LC-2R20G	42039201201	.650-.665	.970-1.010	.845-.875	
	3/4	LC-2R24G	42039201241	.775-.790	1.160-1.185	.930-.960	
	7/8	LC-2R28G	42039201281	.910-.935	1.345-1.375	1.083-1.113	
FLANGED STEEL 3LC	1/2	3LC-2R16G	42039203161	.515-.535	.793-.807	.716-.746	.094-.156
	5/8	3LC-2R20G	42039203201	.650-.665	.970-1.010	.929-.959	.125-.187
	3/4	3LC-2R24G	42039203241	.775-.790	1.200-1.710	1.117-1.147	.156-.218
	7/8	3LC-2R28G	43039203281	.910-.930	1.360-1.375	1.300-1.330	.187-.250

\*When using 3LC collars, include J dimension in grip dimension to determine grip number.

**Benefits:**

- Structural high strength blind steel fastener
- Excellent pull-together properties, high clamping force

High-strength industrial blind bolt. Meets ASTM A307 strength requirements. Use in situations where a two-piece fastener would commonly be used. BOM® fastener install from just one side by a single worker—saving time and reducing cost.

DIA.	MFG PART #	BYLER PART #	GRIP RANGE	HOLE SIZE	RIVET DIMENSIONS					
					A	B	C	D	E	M ref
3/16	BOM-R6-3 BOM-R6-4	41022006031 41022006041	.157-.219 .220-.281	7/32 NOM .208-.222	.276-.286	.152-.168	.015	.196-.206	.785	.439 .501
1/4	BOM-R8-3	41022008031	.157-.219	.277-.292	.368-.380	.205-.225	.020	.262-.275	.860	.523
	BOM-R8-4	41022008041	.220-.281							.585
	BOM-R8-5	41022008051	.282-.344							.648
	BOM-R8-6	41022008061	.345-.406							.710
	BOM-R8-7	41022008071	.407-.469							.773
	BOM-R8-8	41022008081	.470-.531							.835
	BOM-R8-9	41022008091	.532-.594							.898
	BOM-R8-10	41022008101	.595-.656							.960
	BOM-R8-11	41022008111	.657-.719							1.023
	BOM-R8-12	41022008121	.720-.781							1.085
5/16	BOM-R10-4	41022010041	.188-.312	.348-.368	.468-.478	.266-.278	.025	.332-.346	1.285	.695
	BOM-R10-6	41022010061	.313-.437							.820
	BOM-R10-8	41022010081	.438-.562							.945
	BOM-R10-10	41022010101	.563-.687							1.070
	BOM-R10-12	41022010121	.688-.812							1.195
	BOM-R10-14	41022010141	.813-.937							1.320
	BOM-R10-16	41022010161	.938-1.062							1.445
3/8	BOM-R12-4	41022012041	.188-.312	.413-.435	.553-.563	.315-.327	.030	.393-.411	1.230	.766
	BOM-R12-6	41022012061	.313-.437							.891
	BOM-R12-8	41022012081	.438-.562							1.016
	BOM-R12-10	41022012101	.563-.687							1.141
	BOM-R12-12	41022012121	.688-.812							1.266
	BOM-R12-14	41022012141	.813-.937							1.391
	BOM-R12-16	41022012161	.938-1.062							1.516
	BOM-R12-18	41022012181	1.063-1.187							1.641
	BOM-R12-20	41022012201	1.188-1.312							1.766
1/2	BOM-R16-4	41022016041	.251-.375	9/16 NOM .546-.581	.745-.755	.415-.438	.035	.529-.544	1.530	1.000
	BOM-R16-6	41022016061	.376-.500							1.125
	BOM-R16-8	41022016081	.501-.625							1.250
	BOM-R16-10	41022016101	.626-.750							1.375
	BOM-R16-12	41022016121	.751-.875							1.500
5/8	BOM-R20-4GA	41022020041	.251-.500	11/16 NOM .687-.728	.931-.941	.507-.545	.040	.669-.685	1.710	1.213
	BOM-R20-8GA	41022020081	.501-.750							1.463
	BOM-R20-12GA	41022020121	.751-1.000							1.713
	BOM-R20-16GA	41022020161	1.001-1.250							1.963
3/4	BOM-R24-4	41022024041	.251-.500	13/16 NOM .828-.873	1.120-1.130	.637-.654	.050	.795-.816	2.150	2.213
	BOM-R24-8	41022024081	.501-.750							1.380
	BOM-R24-12	41022024121	.751-1.000							1.630
	BOM-R24-16	41022024161	1.001-1.250							1.880 2.130

\*All steel

**BOM® Tooling**

DIA.	NOSE ASSEMBLY - PNEUMATIC			NOSE ASSEMBLY - HYDRAULIC			MODEL 2480
	245	246 / 256	2025	2480	2580	2600	
3/16	-	-	59299994	59299994	-	-	
1/4	592998301	592998301	-	-	592998301	-	
5/16	-	59299769	-	-	59299769	592993119	
3/8	-	592991272*	-	-	-	592993122	

\*Use only in very low volume repair applications

Contact Byler Rivet for more information about tooling regarding larger sizes. Minimums may apply.

HUCK

## Model 2025



### PNEUDRAULIC TOOL

The Model 2025 is a high performance, ergonomic tool designed for use with blind rivets & small diameter two-piece Huck bolts. Made for both high speed production (**up to 35 fasteners/minute**) & repair applications. Lightweight, reliable & easy to use, these tools deliver a level of performance never before possible in a low cost pneudraulic tool.

**Byler Part #:5912025**

**Fill Bottle**  
**Part #:593120337**



### TOOL SPECIFICATIONS

**Sets:** 3/16" Bom, -12 Hucktainer;  
3/16" & 1/4" Magna-Lok, Magna-Bulb, Auto-Bulb,  
Magna-Grip & C6L / 120L  
**Weight:** 5.75 lbs.  
**Req. Air Pressure:** 90-100psi  
**Features:** in-line piston for one-stroke  
installation & a pintail deflector  
**Fluid:** Automatic Transmission Fluid  
DEXTRON III® or equivalent  
**Working Stroke:** .675"  
**Capacity:** 5290 lbs @ 90 psi  
**Options:** Extended Piston version (2025L)  
Optional Vacuum Collection System (2025V)

## Model 2480



### HYDRAULIC TOOL

The Model 2480 is a very lightweight tool which provides for high-speed installation of a wide range of HuckBolts and Huck blind fasteners. **Sets up to 32 fasteners per minute.** The tool has only one moving part, resulting in outstanding reliability and minimal maintenance. Great for use in limited clearance areas.

**Byler Part #:5912480**

### TOOL SPECIFICATIONS

**Sets:** 3/16" Bom, -12 Hucktainer;  
3/16" & 1/4" Magna-Lok, Magna-Bulb, Auto-Bulb,  
Magna-Grip & C6L / 120L  
**Weight:** 2.2 lbs.  
**Pull Pressure:** 8400 psi  
**Return Pressure:** 3200 psi  
**Stroke:** .85"  
**Pull Capacity:** 5700 lbs

## Nose Assemblies for 2025 & 2480

FASTENERS	DIA.	STANDARD 3"	LONG 6"
BOM®	3/16"	59299994	N/A
Magna-Lok® Magna-Bulb®	3/16"	592993300	
		592993303*	
	1/4"	592993301	
		592993305*	592993306*
	3/16" & 1/4"	592993487	N/A
Hucktainer®	3/8"	592993464	592991457
Magna-Grip®	3/16"	592991456	
		592993201	
	1/4"	592991458	
		592993204	592993205
C6L®	3/16"	592993003	N/A
	1/4"	592993006	

\*Replaceable Anvil Insert

## Hydraulic Hose Assemblies



PART #	LENGTH
59311830912	12 ft
59311830926	26 ft
59311830938	38 ft
59311830952	52 ft

## Complete Huck Cab Kit



**Part # 650002**

### Includes:

- 2025 tool
- Four Nose Assemblies
- Magna-Loks®
- Huck Bolts® & Collars®
- Stainless Huck Bolts®
- "Paccar" Huck Bolts®
- Variety of Steel Inserts
- 2 Expandable Insert Tools

## Hydraulic POWERIGS® for Model 2480



**Part # 591940**

### 940 RIG

**Operates:** 1 tool only  
**Flow Rate:** .3 GPM  
**Power:** Electric: 115 or 220 volts, single phase  
**Weight:** 75 lbs, operational; 66 lbs without fluid  
**Length:** 12.5" L x 10.5" W x 18" H



**Part # 591918**

### 918 & 918(-5) RIGS

**Operates:** 2 tools  
**Flow Rate:** 2 GPM  
**Power:** Electric: 220, 440 or 550 volts, 3 phase  
**Weight:** 708 lbs, operational; 585 lbs without fluid  
**Length:** 44" L x 25" W x 30" H  
**Also Available:** **918(-5) RIG** operates up to 3 tools **Part # 5919185**

**Ask your Byler Sales Representative about Huck Tooling Rentals!**



HUCK

## Model 256



### PNEUDRAULIC TOOL

The Model 256 tool is designed for high-speed production applications, able to **install up to 20 fasteners per minute**. It features a concentric (inline) pull piston and new front gland design, allowing for easy piston removal & increased seal life, which adds to its durability.

Byler Part #:591256

Fill Bottle  
#:693120337

Stall Nut  
#:120824



Fill Tool  
#:1124665

Sets 5/16" & 3/8" Huck Fasteners!

### TOOL SPECIFICATION

**Sets:** 3/16", 1/4", 5/16" & 3/8" Huck bolts & fasteners in all alloys  
**Weight:** 11.1 lbs without nose assembly  
**Req. Air Pressure:** 90-100 psi  
**Stroke:** 1.026"  
**Pull Capacity:** 9986 lbs  
**Fluid:** Automatic Transmission Fluid DEXTRON III® or equivalent

## Model 2580



### HYDRAULIC TOOL

The Model 2580 is a lightweight tool designed for use in a wide range of high-speed production applications. With only one moving part, the tool provides for increased reliability and requires minimal maintenance. An offset piston design allows the Model 2580 to easily fit in limited clearance applications.

Byler Part #:5912580

### TOOL SPECIFICATION

**Sets:** 3/16", 1/4", 5/16" & 3/8" Huck bolts & fasteners in all alloys  
**Weight:** 6.8 lbs without nose assembly  
**Stroke:** .940"  
**Pull Pressure:** 7400 psi  
**Pull Capacity:** 8240 lbs  
**Fluid:** Automatic Transmission Fluid DEXTRON III® or equivalent

## Nose Assemblies for Model 256 & 2580

FASTENERS	DIA.	STANDARD 3"
BOM®	1/4"	99-830-1
	3/8"	99-1272
	5/16"	99-769
Magna-Lok®	3/8"	99-3318
C6L®	1/4"	99-2564
	5/16"	99-99-245
	3/8"	99-100-245
Magna-Grip®	1/4"	99-1290
		99-3207
	5/16"	99-1439
	3/8"	99-1440



## Protect Your Investment!



**In-line Air Regulators** are highly recommended for **ALL AIR & PNEUDRAULIC TOOLS**. They maintain continuous air pressure at the tool. **Part #: 6001100**

## Hydraulic POWERIGS® for Model 2580



Part # 591940

### 940 RIG

The Model 940 POWERIG® is a portable unit sized for moderate production and repair applications. Choice of 115 or 220 Volt AC power, single phase. Has adjustable hydraulic outputs and quick-connect couplers for connecting installation tool hoses.

**Operates:** 1 tool only  
**Flow Rate:** .3 GPM  
**Power:** Electric: 115 or 220 volts, single phase  
**Weight:** 75 lbs, operational; 66 lbs without fluid  
**Length:** 12.5" L x 10.5" W x 18" H

### 918 RIG

The Model 918 POWERIG® is the largest hydraulic unit offered by HUCK. Sized for high production applications the unit can operate up to two tools independently. A 22-gallon reservoir stores hydraulic fluid, with a filter-strainer in the suction line to assure clean, filtered fluid. This electrically powered model also delivers sufficient power to operate the tools up to 100 feet away.

**Flow Rate:** 2 GPM  
**Power:** Electric: 220, 440 or 550 volts, 3 phase  
**Weight:** 708 lbs, operational; 585 lbs without fluid  
**Length:** 44" L x 25" W x 30" H

**Also Available: 918(-5) RIG**  
operates up to 3 tools **Part # 5919185**

## Hydraulic Hose Assemblies



PART #	LENGTH
59311830912	12 ft
59311830926	26 ft
59311830938	38 ft
59311830952	52 ft



Part # 591918

HUCK

## Model 202



### PNEUDRAULIC TOOL

The Model 202 is a lightweight, high-speed tool. **Suited for both production and maintenance repair where 3/16" Huck Bolts & 1/4" and smaller blind diameter fasteners are used.**

The 202 features an in-line piston for production rates of up to 35 installations per minute. The 202's ergonomically designed handle and light weight combine to minimize operator fatigue.

**Byler Part #: 591202**



### TOOL SPECIFICATION

**Sets:** 3/16" & 1/4" Magna-Lok, Magna-Bulb, Auto-Bulb, 3/16" Magna-Grip & C6L / 120L

**Weight:** 5.1 lbs without nose assembly

**Req. Air Pressure:** 90-100 psi

**Stroke:** .750"

**Hydraulic Fluid:** Automatic Transmission Fluid DEXTRON II® or equivalent

**Pull Capacity:** 3889 lbs

**Options:** 202B - with pintail collection bottle

202V - with vacuum assist pintail collection bottle

202L - with extended piston

202LV - with vacuum & extended piston

## Model 2022



### PNEUDRAULIC TOOL

The Model 2022 is a lightweight, high-speed tool. Suited for both production and maintenance/repair where 3/16" Huck Bolts & 1/4" and smaller blind diameter fasteners are used. Ergonomically designed handle.

**Byler Part #: 5912022**

### TOOL SPECIFICATION

**Sets:** 3/16" & 1/4" Magna-Lok, Magna-Bulb, Auto-Bulb, 3/16" Magna-Grip & C6L / 120L

**Weight:** 5.4 lbs

**Req. Air Pressure:** 90-100 psi

**Stroke:** 1.026"

**Pull Capacity:** 3889 lbs

**Options:** 2022B - with pintail collection bottle

2022V - with vacuum assist pintail collection bottle

2022L - with extended piston

2022LV - with vacuum & extended piston

## Model 2024



### PNEUDRAULIC TOOL

**The Model 2024 is the workhorse of the Huck 2000 Series.** It combines added stroke & increased pulling capacity to handle most jobs using up to 1/4" blind fasteners & two piece bolts. It is designed to pull 1/4" HuckLok in one stroke.

**Byler Part #: 5912024**

### TOOL SPECIFICATION

**Sets:** 3/16" Huckbolts; 3/16" & 1/4" Magnalok; 3/16" & 1/4" HuckLok

**Weight:** 5.5 lbs

**Req. Air Pressure:** 90-100 psi

**Stroke:** .850"

**Capacity:** 3993 lbs @ 90 psi

**Options:** 2024L - with extended piston

## Model 2015



### PNEUDRAULIC TOOL

The Model 2015 is a lightweight, high-speed tool that features an in-line piston for one-stroke installations of up to 35 cycles per minute. Ergonomically designed handle. Anvil inserts for nail-type rivets can be easily changed out to accommodate various sizes. The tool's nose diameter of .78" makes it ideal for close clearance applications.

**Byler Part #: 5912015**

### TOOL SPECIFICATION

**Sets:** 3/16" & 1/4" Magna-Lok, Magna-Bulb & Auto-Bulb

**Weight:** 5.6 lbs

**Req. Air Pressure:** 90-100 psi

**Stroke:** .683"

**Capacity:** 90 psi

**Options:** Nose Inserts 125154 & 125155 are furnished with tool; others sold separately.

### LEGEND

- \* Replaceable Anvil
- \*\* Countersunk Avail.
- \*\*\* Button Head Avail.
- ° Available in 3/32", 1/8" & 5/32"
- § Available in 1/8", 5/32"

### Nose Inserts for 2015

FASTENERS	DIA.	INSERT
Auto-Lock®, Auto-Clamp® & Auto-Bulb®	3/16"	59125154
Magna-Lok® & Magna-Bulb®	3/16"	59125154**
Magna-Tite®	3/16"	59125280**
	1/4"	59125282***
Grip-Rite®	3/16"	59125154 °
Stronghold®	3/16"	59125283 §
Peel®	1/4"	59125184

### Nose Assemblies for 202, 2022 & 2024

FASTENERS	DIA.	STANDARD 3"	LONG 6"
Magna-Grip®	3/16"	592991456	592991457
		592993201	592993202
C6L®	3/16"	592993003	N/A
Magna-Lok®	3/16"	592993300	
		592993003*	
	1/4"	592993301	
	3/16" & 1/4"	592993305*	592993306*
		592993487	N/A

# CALL THE TOOLING EXPERTS!

## Authorized Tool Repair & Warranty Center

**Byler Rivet's** factory trained technicians are certified to repair pneudraulic, air and hydraulic tooling from a variety of manufacturers. Our history of fast turn-around, in-stock parts, technical support, and tool rental options sets us apart from the competition.

At Byler Rivet, our knowledgeable tool staff will walk you through minor repairs over the phone, saving you time and money. You can trust when you send in your tools for service, getting you back into production is our top concern!

### TOOL REPAIR SERVICE:

- **Rapid Turn-Around On Repairs**
- **Detailed Quotes provided prior to Service**
- **Technical Help & Troubleshooting - "Over the Phone"**
- **Tool Schematics and Charts Available**
- **Tool Parts and Nose Assemblies Stocked**
- **Factory Certified Technicians**
- **Huck, POP, AVK & Avdel Warranty Repair Center**



### TOOL RENTAL:

Byler Rivet offers tool rentals for people who have small repairs or those who need to keep production running smoothly while their tools are being repaired. We rent Pneudraulic, Air and Hydrualic riveters for all your fastening needs.



**Ask Us About A Tool Rental Today!**



### ON-LINE TOOL SUPPORT

Byler Rivet keeps you informed by providing technical videos, tool schematics and tool specs at [bylerrivet.com](http://bylerrivet.com) to improve your riveting and tooling experience.



- **Detailed Tool Charts and Product Specs**
- **Tool Schematics**
- **Videos**
- **Technical Data and Images**
- **Web Catalog**

For technical assistance and help on all your tools contact  
[tooldepartment@bylerrivet.com](mailto:tooldepartment@bylerrivet.com)



**[www.BylerRivet.com](http://www.BylerRivet.com)**

**800-325-3147**



**BYLER**RIVET.COM  
800-325-3147

**DISTRIBUTOR FOR:**

**POP**



**Avdel**



**GESIPA**  
Fasteners USA, Inc.



**VIKING**  
DRILL & TOOL



**CAMCAR**

**BÖLLHOFF**



**OLYMPIC**  
FASTENING  
SYSTEMS, INC.

**marson**

**IR** Ingersoll Rand  
Industrial Technologies

**M** MANUS-BOND

**Silaprene**

Tel: 972-986-6792  
Fax: 972-986-2832  
Email: [info@bylerrivet.com](mailto:info@bylerrivet.com)

2118 Parkside Ave.  
Irving, TX 75061